

# 2024 CEMENT IN KOREA





Build your future with

# Cement





## CONTENTS

- 04 About KCA
- 05 Map of Cement Production Plant
- 06 Scale of Korea Cement Industry
- 07 Supply & Demand
- 08 Cement Production
- 09 Sales Volume
- 10 Export & Import
- 11 Transport Volume

### KCA MEMBERS

- 12 Sampyo Cement
- 13 Ssangyong C&E
- 14 Hanil Cement
- 15 Hanil Hyundai Cement
- 16 Asia Cement
- 17 Sungshin Cement
- 18 Halla Cement
- 19 Hankook Cement & Textile
- 19 Union

# About KCA

## ■ President Message



President  
**HyunJoon Lee** 이 현준

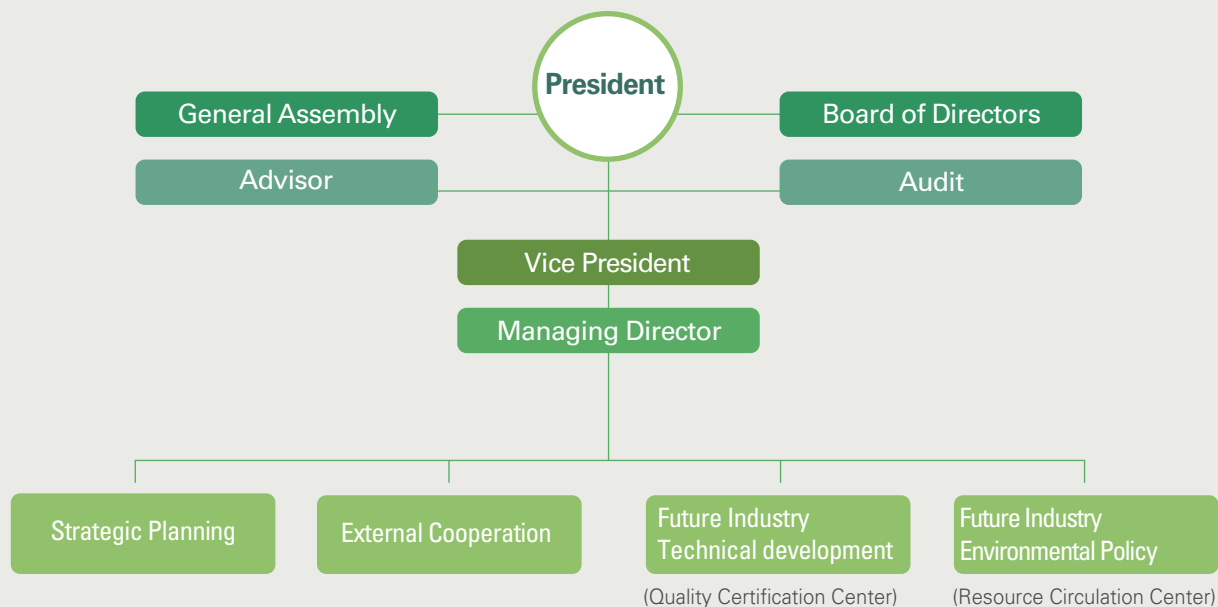
The cement industry is one of the core industries in Korea. It has grown with Korea's economic development as a foundation of national economic development supporting the construction industry. The cement industry is now evolving into the future-oriented, 21st century's leading industry through the production of low cost, high quality, trust-worthy and environmentally friendly cement for coexistence with our community.

KCA, Korea Cement Association is endeavoring to contribute to the continuous development of the cement industry and prosperity of our people in the face of rapidly changing industrial surroundings and fierce worldwide competition.

KCA provides useful cement related information that can benefit the industry and its concerned parties such as major statistics, latest movements of member companies, recycling resources, CSR and etc. We will keep paying a keen attention to the opinions related to the cement industry to serve as a place of global exchange in the cement industry. We look forward to your generous support.

Thank you.

## ■ Organizational Chart



# Map of Cement Production Plant

## ■ Location of Kiln Plants



# Scale of Korea Cement Industry (2024)

## ■ Industry Status



Member Companies 9  
No. of Grinding Plants 23



No. of Kiln Plants(kiln) 10(46)  
Kiln Capacity (1,000t) 61,474



Cement Clinker Export (1,000t) 2,084



Cement Production (1,000t) 51,116  
Domestic Consumption (1,000t) 50,237



No. of Employees 4,928



No. of Distribution Terminals(Silos) 69(148)  
Terminal Capacity (1,000t) 1,043

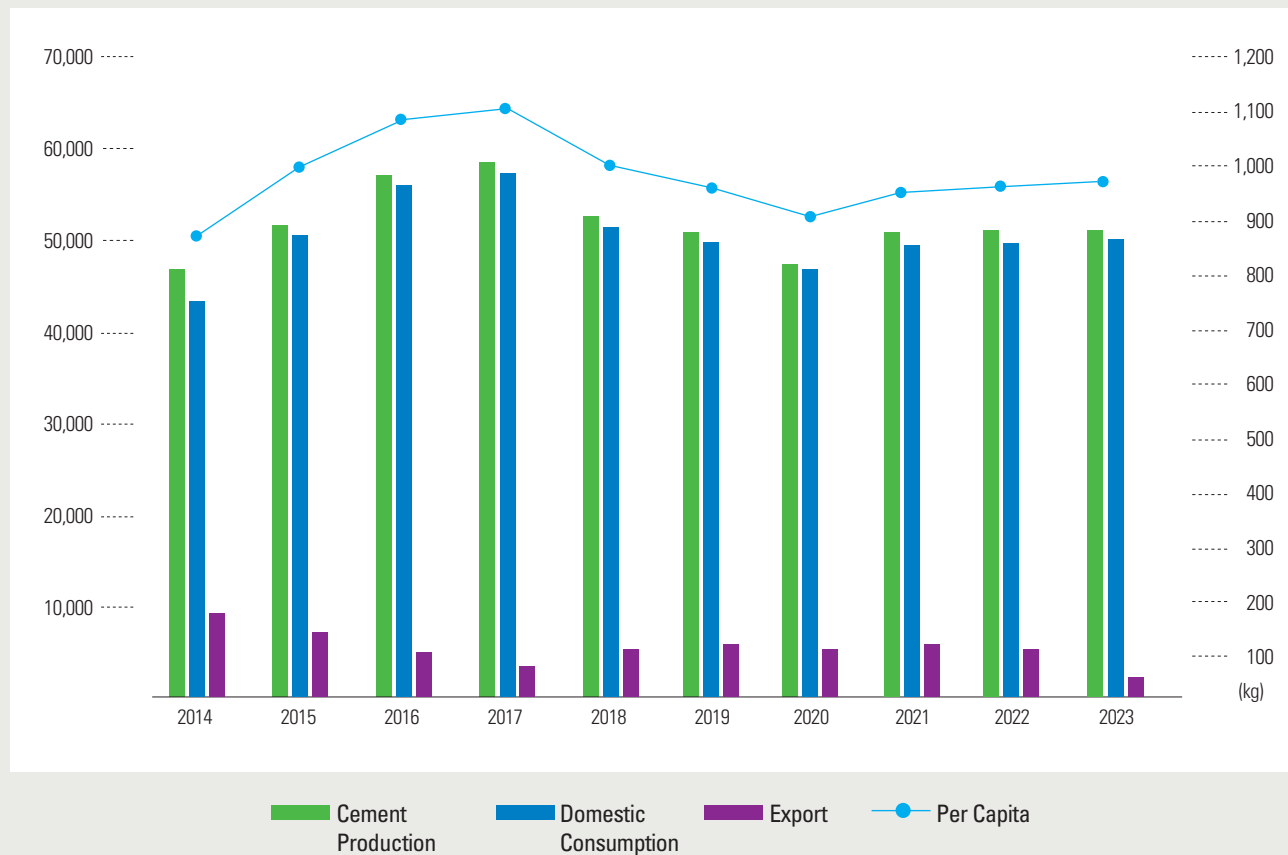
# Supply & Demand

## ■ Production · Sales · Consumption

(1,000 T)

Year	Cement Production		Sales						Import		Domestic Consumption		Per Capita (kg)
		%	Domestic	%	Export	%	Total	%		%		%	
2014	47,048	99.5	42,810	96.5	9,525	105.3	52,335	98.0	897	112.4	43,707	96.8	861
2015	52,044	110.6	49,579	115.8	7,348	77.1	56,927	108.8	1,158	129.1	50,737	116.1	995
2016	56,507	108.6	54,543	110.0	5,043	68.6	59,586	104.7	1,213	104.7	55,756	109.9	1,089
2017	57,400	101.6	55,820	102.3	3,389	67.2	59,209	99.4	891	73.5	56,711	101.7	1,104
2018	52,093	90.8	50,575	90.6	5,444	160.6	56,019	94.6	662	74.3	51,237	90.3	993
2019	50,636	97.2	48,884	96.7	6,581	120.9	55,465	99.0	599	90.5	49,483	96.6	956
2020	47,519	93.8	46,649	95.4	5,282	80.3	51,931	93.6	513	85.6	47,162	95.3	910
2021	50,450	106.2	48,814	104.6	4,613	87.3	53,427	102.9	550	107.2	49,364	104.7	954
2022	51,062	101.2	49,111	100.6	2,643	57.3	51,754	96.9	540	98.2	49,651	100.6	961
2023	51,116	100.1	49,495	100.8	2,084	78.8	51,579	99.7	742	137.4	50,237	101.2	971

Clinker Included in export and import

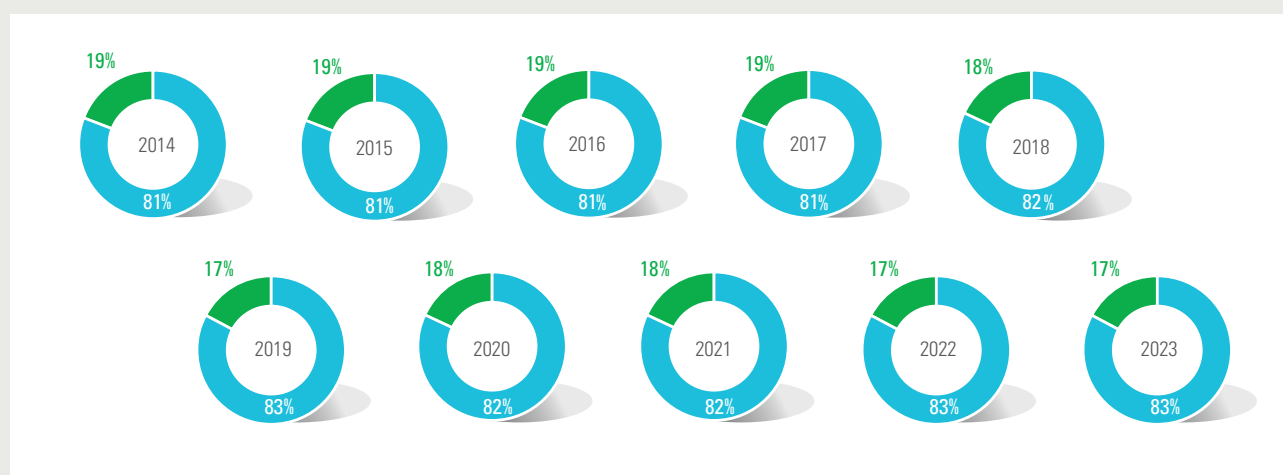


# Cement Production

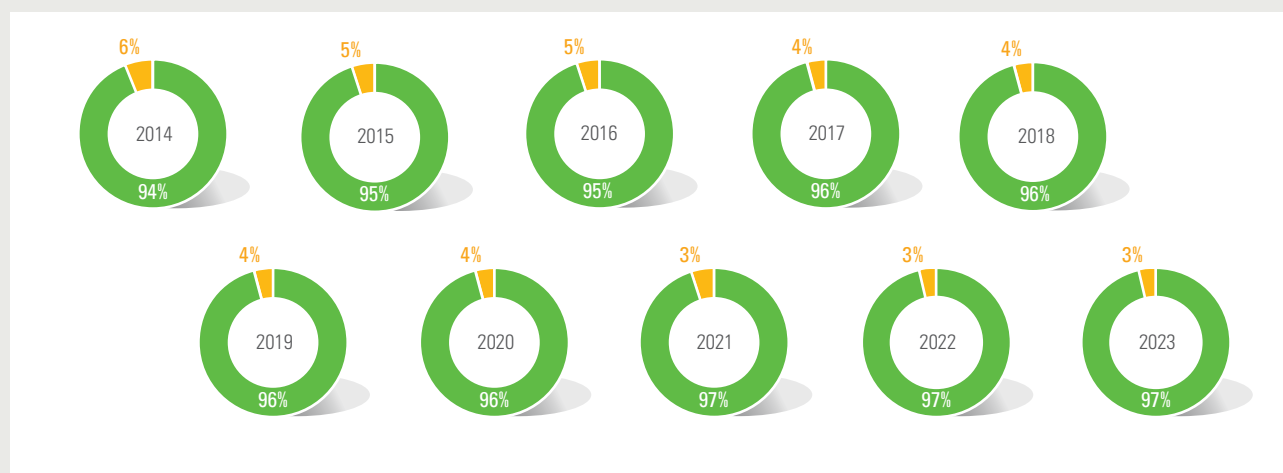
## ■ Production by type of cement

(1,000 T)

TYPE	2014	2015	2016	2017	2018	2019	2020	2021	2022	2023
Portland Cement	38,129	42,294	45,887	46,570	42,702	41,915	38,892	41,524	42,567	42,666
Blended Cement	8,919	9,750	10,620	10,830	9,391	8,721	8,627	8,926	8,495	8,450
<b>TOTAL</b>	<b>47,048</b>	<b>52,044</b>	<b>56,507</b>	<b>57,400</b>	<b>52,093</b>	<b>50,636</b>	<b>47,519</b>	<b>50,450</b>	<b>51,062</b>	<b>51,116</b>



■ Portland Cement ■ Blended Cement



■ Bulk Cement ■ Bag Cement

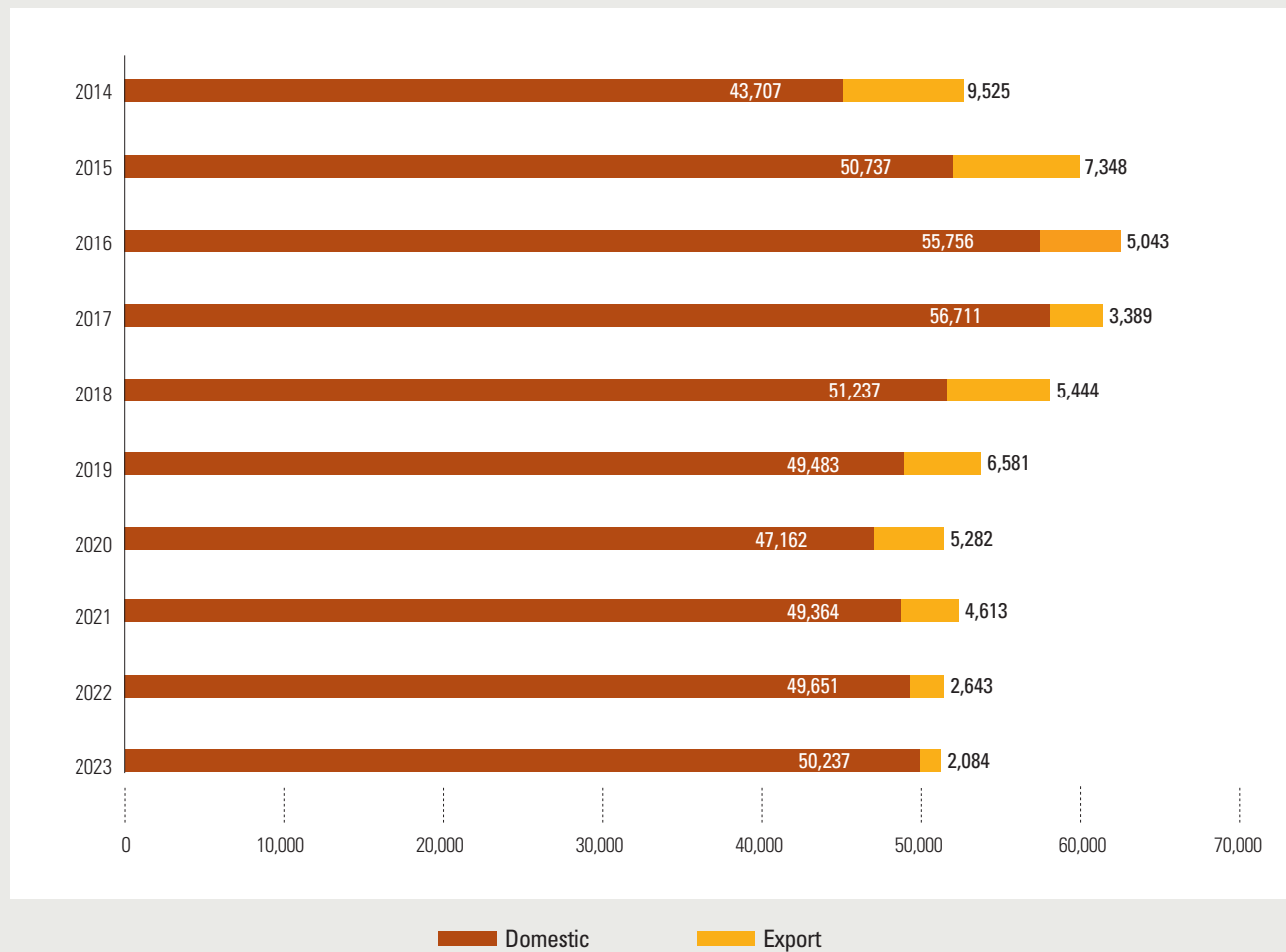


# Sales Volume

## ■ Sales volume of the member companies

(1,000 T)

Year	Sampyo	SsangYong	Hanil	Hanil Hyundai	Asia	Sungshin	Halla	Hankook	Others	TOTAL
2014	8,301	13,370	5,941	4,371	3,191	5,775	7,250	1,508	3,525	53,232
2015	8,156	14,076	6,256	4,936	3,712	7,694	7,094	1,851	4,310	58,085
2016	9,088	14,045	7,140	5,287	4,039	7,795	7,125	1,686	4,594	60,799
2017	9,706	13,472	6,943	4,773	4,190	7,171	7,781	1,949	4,115	60,100
2018	8,700	13,597	6,336	4,846	3,593	7,256	7,178	1,582	3,593	56,681
2019	8,935	13,105	5,791	5,395	3,451	7,114	7,189	1,707	3,377	56,064
2020	8,123	12,214	5,503	4,643	3,321	6,762	6,952	1,510	3,416	52,444
2021	8,092	12,592	5,652	5,434	3,447	7,092	6,690	1,507	3,471	53,977
2022	8,046	11,941	5,769	5,133	3,463	6,852	6,320	1,353	3,417	52,294
2023	8,184	12,248	5,761	4,926	3,594	6,655	6,170	1,527	3,256	52,321



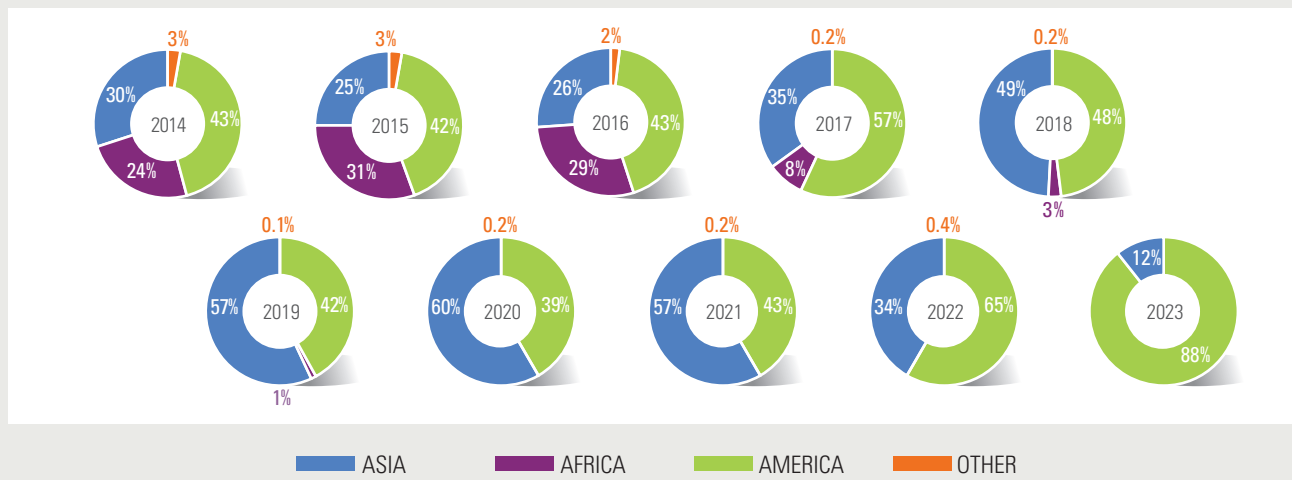
# Export & Import

## Export

(1,000 T)

CONTINENT	2014	2015	2016	2017	2018	2019	2020	2021	2022	2023
ASIA	2,819	1,817	1,329	1,195	2,678	3,761	3,189	2,607	907	249
AFRICA	2,285	2,261	1,460	262	159	79				
AMERICA	4,139	3,068	2,176	1,924	2,596	2,734	2,083	1,997	1,725	1,835
OTHER	282	202	78	8	11	7	10	9	11	
<b>TOTAL</b>	<b>9,525</b>	<b>7,348</b>	<b>5,043</b>	<b>3,389</b>	<b>5,444</b>	<b>6,581</b>	<b>5,282</b>	<b>4,613</b>	<b>2,643</b>	<b>2,084</b>

Clinker Included

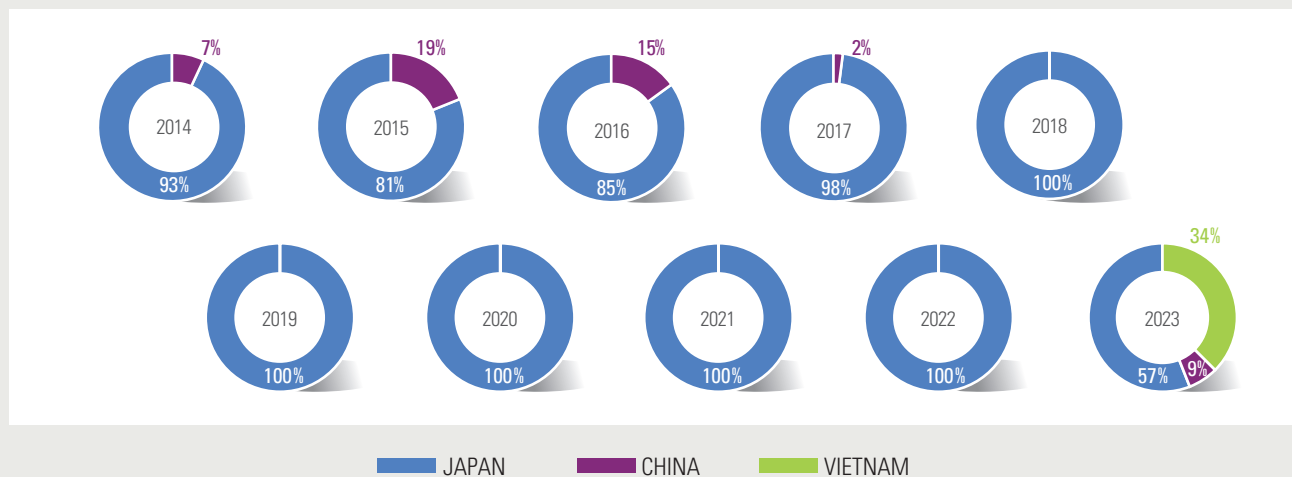


## Import

(1,000 T)

CONTINENT	YEAR COUNTRY	2014	2015	2016	2017	2018	2019	2020	2021	2022	2023
		ASIA	JAPAN	837	942	1,031	871	662	599	513	550
	CHINA	60	216	182	20						63
	VIETNAM										254
<b>TOTAL</b>		<b>897</b>	<b>1,158</b>	<b>1,213</b>	<b>891</b>	<b>662</b>	<b>599</b>	<b>513</b>	<b>550</b>	<b>540</b>	<b>742</b>

Clinker Included



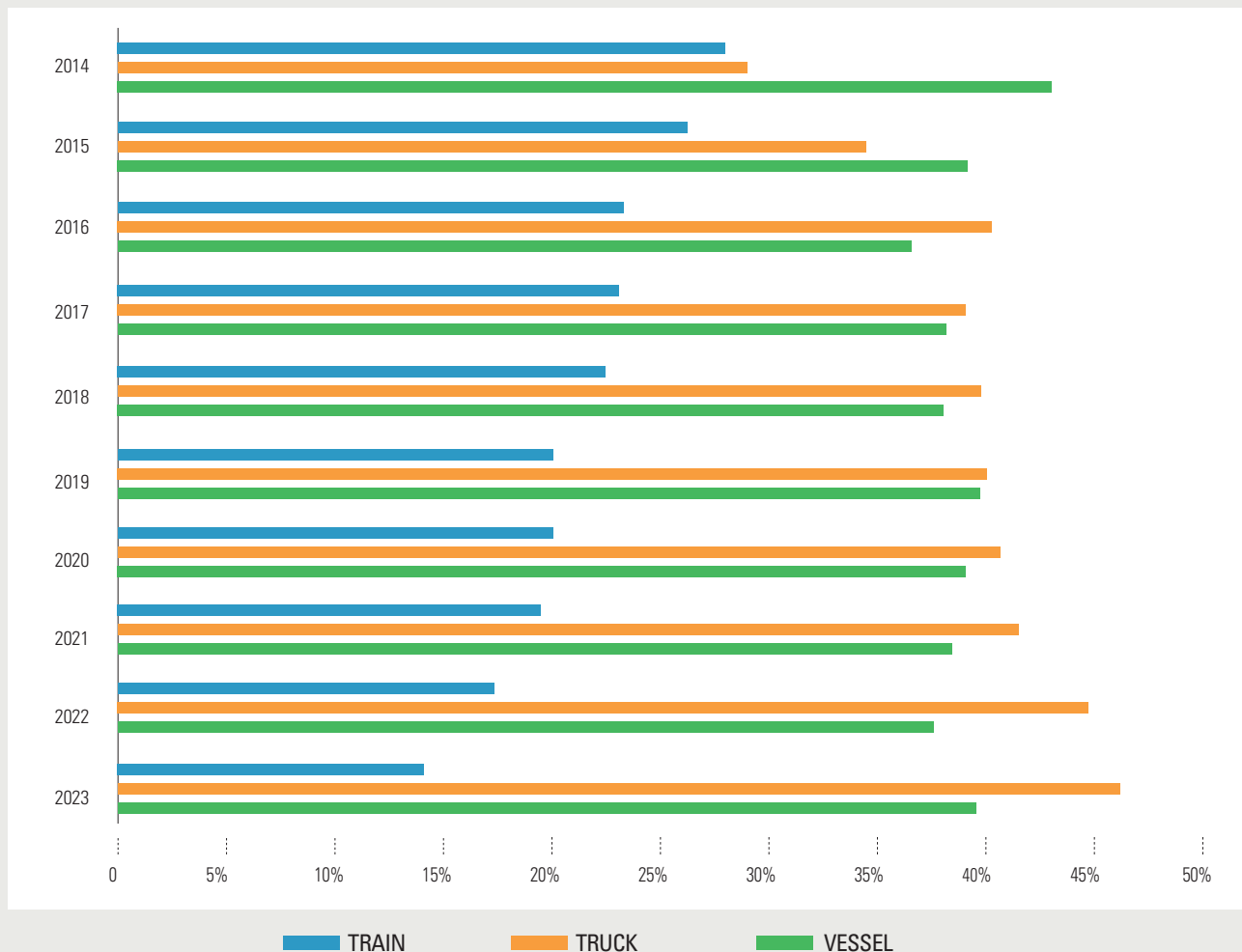
# Transport Volume

## ■ Proportion by type of transport

(1,000 T)

Year	TRAIN		TRUCK		VESSEL		TOTAL
		%		%		%	
2014	14,039	27.5	14,788	28.9	22,268	43.6	51,095
2015	14,747	26.8	18,968	34.5	21,344	38.8	55,059
2016	13,474	23.4	23,159	40.2	20,964	36.4	57,597
2017	13,238	22.9	22,563	39.1	21,910	38.0	57,711
2018	12,346	22.5	21,758	39.7	20,705	37.8	54,809
2019	11,001	20.1	21,960	40.1	21,780	39.8	54,741
2020	10,195	20.0	20,795	40.8	19,986	39.2	50,976
2021	10,417	19.8	21,767	41.4	20,408	38.8	52,592
2022	8,875	17.3	22,988	44.7	19,519	38.0	51,382
2023	7,354	14.2	23,957	46.2	20,547	39.6	51,858

Export Included



## KCA Member

**SAMPYO**  
Cement

<b>Head Office</b>	20, Dongyang-gil, Samcheok-si, Gangwon-do, Republic of Korea (25930)		
<b>Contact</b>	82-33-571-7000	<b>Website</b>	<a href="http://www.sampyocement.co.kr">http://www.sampyocement.co.kr</a>
<b>Establishment</b>	June 15, 1957	<b>Assets</b>	1,256(billion won)

## Production Scale

<b>Clinker Capacity(1,000t)</b>	10,045 / year	<b>Kiln plants</b>	1(Dry Type)
<b>Cement Capacity(t)</b>	33,100 / day	<b>Mill plant</b>	5

## Production List

<b>Cement Product</b>	Ordinary portland cement / Moderate heat cement High early strength cement / Low-heat cement Sulfate resisting cement / Slag cement
<b>Other Product</b>	Dry mortar(For wall plastering) / Dry mortar(For masonry wall) Dry mortar(For Floor Plaster) / Dry mortar(For tile)





## SsangYong C&E

<b>Head Office</b>	34, Supyo-ro, Jung-gu, Seoul, Republic of Korea (04555)		
<b>Contact</b>	82-2-2270-5114	<b>Website</b>	<a href="http://www.ssangyongcne.co.kr">http://www.ssangyongcne.co.kr</a>
<b>Establishment</b>	May 14, 1962	<b>Assets</b>	3,214(billion won)

### Production Scale

<b>Clinker Capacity(1,000t)</b>	14,758 / year	<b>Kiln Plants</b>	2(Dry Type)
<b>Cement Capacity(t)</b>	43,220 / day	<b>Mill Plant</b>	5

### Production List

<b>Cement Product</b>	Ordinary portland cement / Moderate heat cement High early strength cement / Low-heat cement Sulfate resisting cement / Slag cement / Ternary blended cement Ultra super early strength cement / Super high-early strength cement Micro-cement / Geocrete / Non-crack cement
<b>Other Product</b>	Non-shrinkage mortar(Plus) / Non-shrinkage mortar(Basic) Non-shrinkage mortar(SR) / Non-shrinkage mortar(AD) Resistance Acid mortar / Expansion agent (CSA)

## KCA Member



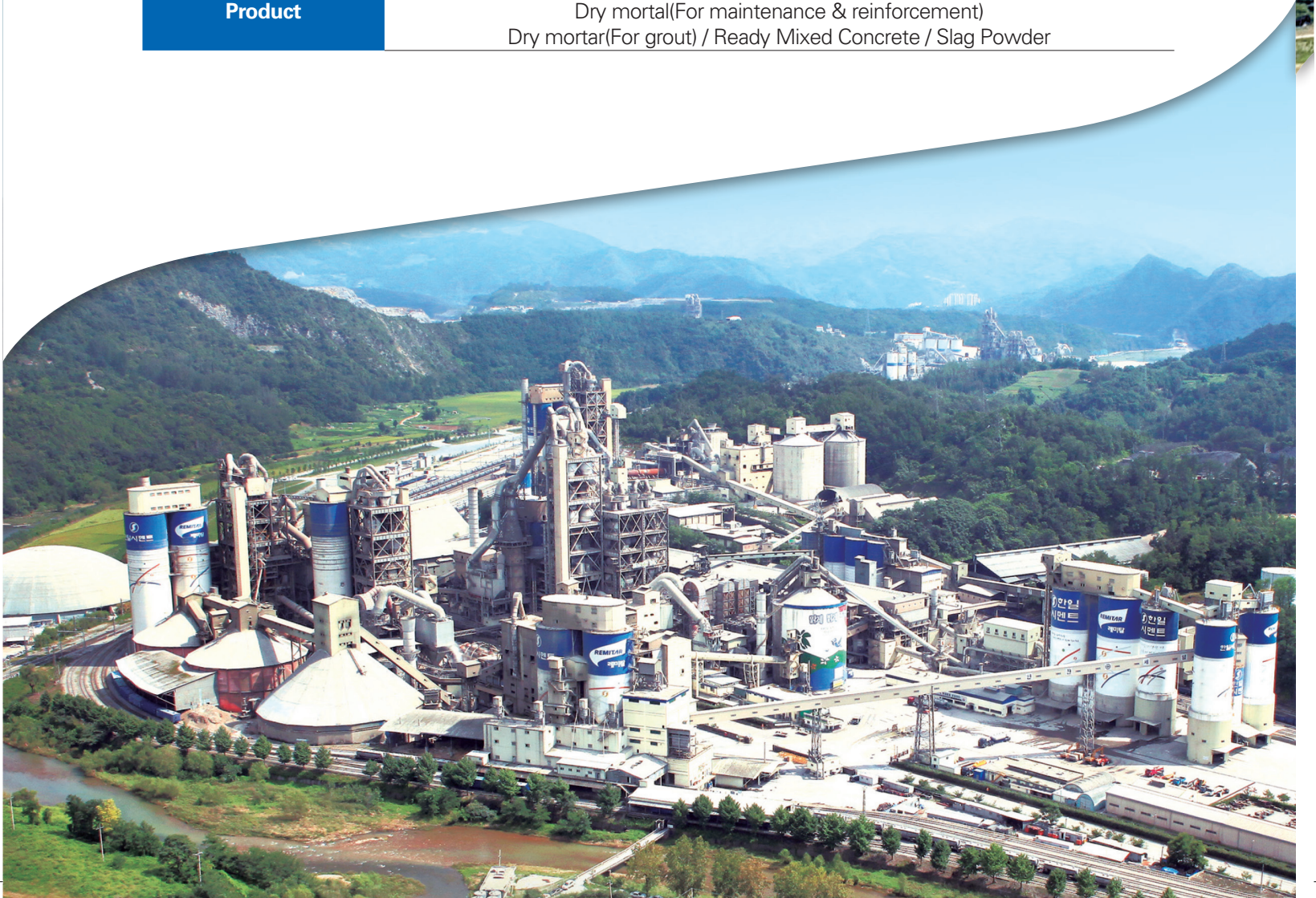
<b>Head Office</b>	275, Hyoryeong-ro, Seocho-gu, Seoul, Republic of Korea (06654)		
<b>Contact</b>	82-2-531-7000	<b>Website</b>	<a href="http://www.hanilcement.com">http://www.hanilcement.com</a>
<b>Establishment</b>	December 28, 1961	<b>Assets</b>	2,078(billion won)

### Production Scale

<b>Clinker Capacity(1,000t)</b>	7,131 / year	<b>Kiln Plants</b>	1(Dry Type)
<b>Cement Capacity(t)</b>	26,700 / day	<b>Mill Plant</b>	3

### Production List

<b>Cement Product</b>	Ordinary portland cement / Moderate cement/ High early strength cement / Low-heat cement / Sulfate resisting cement / Slag cement / Special & Pre-Mixed cement
<b>Other Product</b>	Dry mortar(For wall plastering) / Dry mortar(For masonry) Dry mortar(For Floor screed) / Dry mortar(For tile) Dry mortar(For maintenance & reinforcement) Dry mortar(For grout) / Ready Mixed Concrete / Slag Powder





## HANIL HYUNDAI CEMENT

<b>Head Office</b>	275, Hyoryeong-ro, Seocho-gu, Seoul, Republic of Korea (06654)		
<b>Contact</b>	82-2-520-2114	<b>Website</b>	<a href="http://www.hanilhdcement.com">http://www.hanilhdcement.com</a>
<b>Establishment</b>	September 15, 1964	<b>Assets</b>	838(billion won)

### Production Scale

<b>Clinker Capacity(1,000t)</b>	6,864 / year	<b>Kiln Plants</b>	2(Dry Type)
<b>Cement Capacity(t)</b>	24,620 / day	<b>Mill Plant</b>	3

### Production List

<b>Cement Product</b>	Ordinary portland cement / Moderate heat cement High early strength cement / Low-heat cement Sulfate resisting cement / Slag cement
<b>Other Product</b>	Slag Powder

## KCA Member



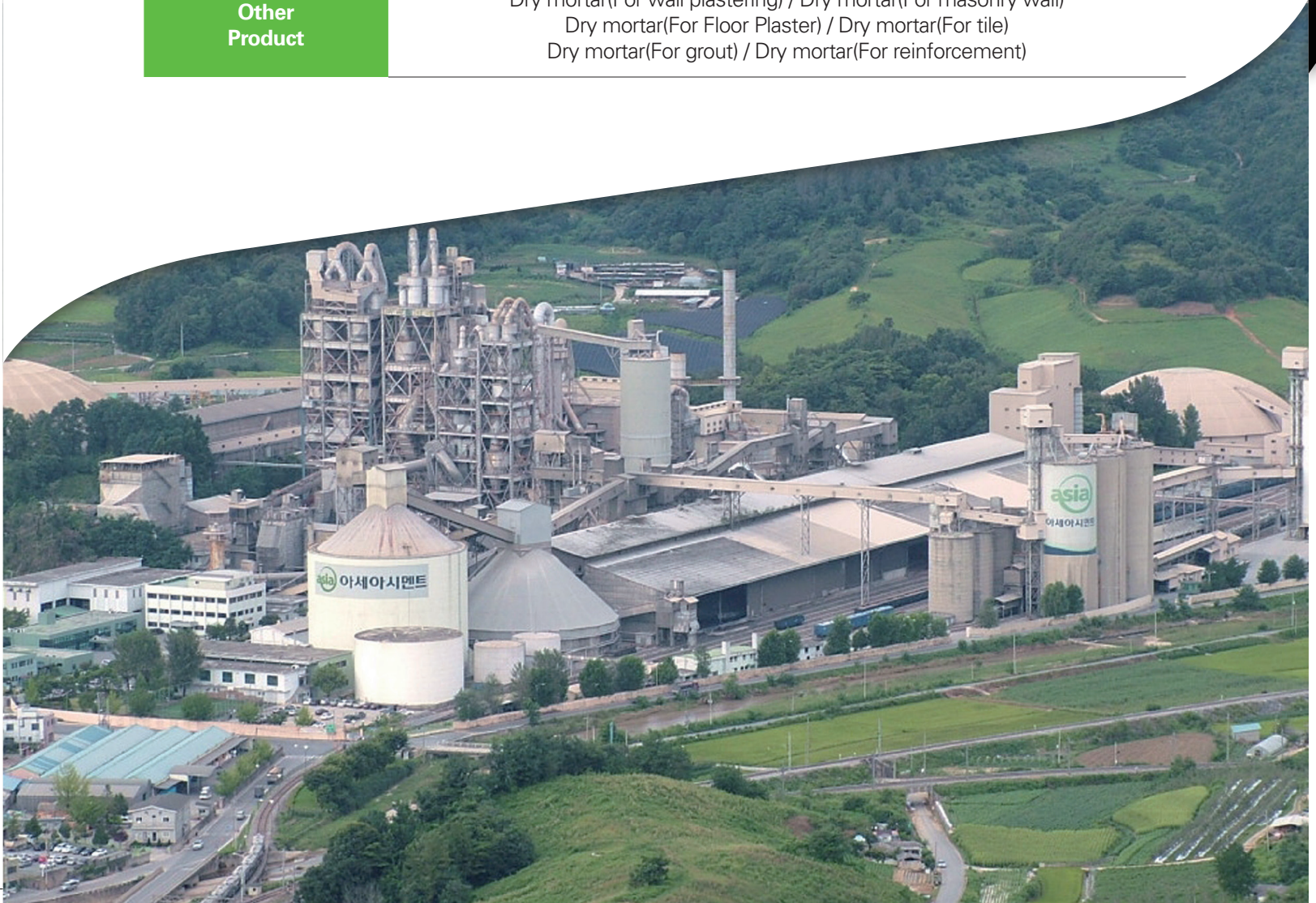
<b>Head Office</b>	430, Nonhyeon-ro, Gangnam-gu, Seoul, Republic of Korea (06223)		
<b>Contact</b>	82-2-527-6500	<b>Website</b>	<a href="http://www.asiacement.co.kr">http://www.asiacement.co.kr</a>
<b>Establishment</b>	November 20, 1965	<b>Assets</b>	1,224(billion won)

## Production Scale

<b>Clinker Capacity(1,000t)</b>	4,146 / year	<b>Kiln Plants</b>	1(Dry Type)
<b>Cement Capacity(t)</b>	12,000 / day	<b>Mill Plant</b>	2

## Production List

<b>Cement Product</b>	Ordinary portland cement / Moderate heat cement High early strength cement / Low-heat cement Sulfate resisting cement / Slag cement / Super Low-heat cement Super high-early strength cement / Geocrete Foamed concrete cement
<b>Other Product</b>	Dry mortar(For wall plastering) / Dry mortar(For masonry wall) Dry mortar(For Floor Plaster) / Dry mortar(For tile) Dry mortar(For grout) / Dry mortar(For reinforcement)







# SUNGSHIN

<b>Head Office</b>	29, Insadong 5-gil, Jongno-gu, Seoul, Republic of Korea (03162)		
<b>Contact</b>	82-2-3782-7000	<b>Website</b>	<a href="http://www.sungshincement.co.kr">http://www.sungshincement.co.kr</a>
<b>Establishment</b>	March 16, 1967	<b>Assets</b>	1,169(billion won)

## Production Scale

<b>Clinker Capacity(1,000t)</b>	9,686 / year	<b>Kiln Plants</b>	1(Dry Type)
<b>Cement Capacity(t)</b>	30,000 / day	<b>Mill Plant</b>	2

## Production List

<b>Cement Product</b>	Ordinary portland cement / Moderate heat cement High early strength cement / Low-heat cement Sulfate resisting cement / Slag cement
<b>Other Product</b>	Ordinary concrete / Light weight concrete Concrete for pavement / High strength concrete Anti washout underwater concrete

## KCA Member



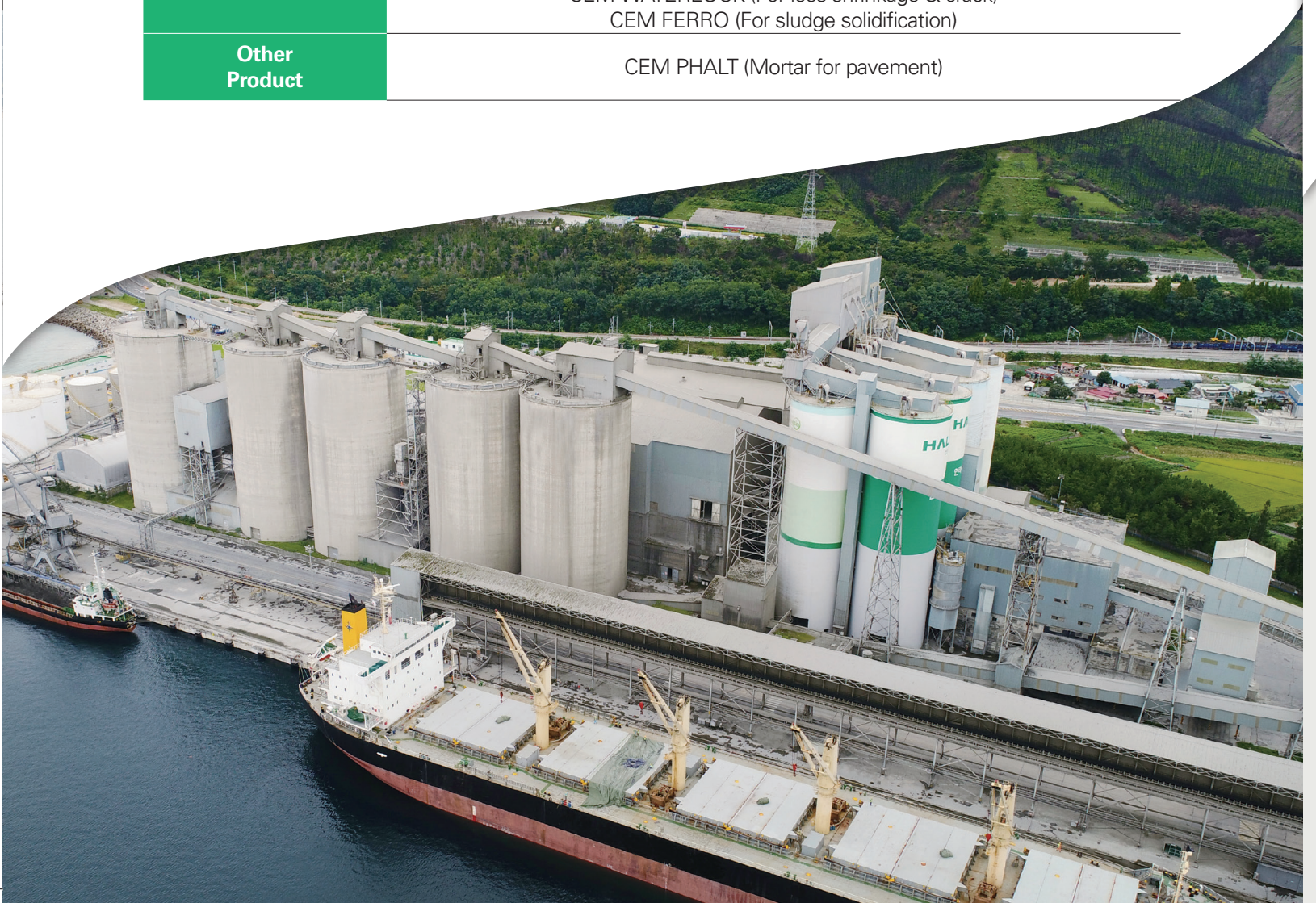
<b>Head Office</b>	225, Sangye-gil, Okgye-myeon, Gangneung-si, Gangwon-do, Republic of Korea (25645)		
<b>Contact</b>	82-33-534-1000	<b>Website</b>	<a href="http://www.hallacement.co.kr">http://www.hallacement.co.kr</a>
<b>Establishment</b>	January 27, 1978	<b>Assets</b>	1,027(billion won)

## Production Scale

<b>Clinker Capacity(1,000t)</b>	8,184 / year	<b>Kiln Plants</b>	1(Dry Type)
<b>Cement Capacity(t)</b>	37,570 / day	<b>Mill Plant</b>	5

## Production List

<b>Cement Product</b>	Ordinary portland cement High early strength cement / Blast-furnace slag cement SUPERMENT PRO (High early strength) CEM PRO & CEM FILE (For steam curing concrete) CEM PILL PRO (For grouting & soil stabilization) CEM LOW HEAT (For mass concrete) CEM WATERLOCK (For less shrinkage & crack) CEM FERRO (For sludge solidification)
<b>Other Product</b>	CEM PHALT (Mortar for pavement)





<b>Head Office</b>	239, Mudeung-ro, Buk-gu, Gwangju, Republic of Korea (61228)		
<b>Contact</b>	82-62-519-1600	<b>Website</b>	<a href="http://www.hcnt.co.kr">http://www.hcnt.co.kr</a>
<b>Establishment</b>	February 18, 1976	<b>Assets</b>	204(billion won)

### Production Scale

<b>Cement Capacity(t)</b>	8,000 / day	<b>Mill Plant</b>	1
---------------------------	-------------	-------------------	---

### Production List

Cement Product	Other Product
Slag cement / Low-heat mixed cement	Slag powder



<b>Head Office</b>	94, Sogong-ro, Jung-gu, Seoul, Republic of Korea (04532)		
<b>Contact</b>	82-2-757-3801	<b>Website</b>	<a href="http://www.unioncement.com">http://www.unioncement.com</a>
<b>Establishment</b>	October 10, 1964	<b>Assets</b>	210(billion won)

### Production Scale

<b>Clinker Capacity(1,000t)</b>	150 / year	<b>Kiln Plants</b>	2
<b>Cement Capacity(t)</b>	550 / day	<b>Mill Plant</b>	2

### Production List

Cement Product	Other Product
White portland cement / Tile cement Alumina cement / Jet cement / Grout	Dry Mortar / ALC Mortar Power Flex / Filter Press



### Address

16th Fl. Samil Plaza, 14, Dogokro 1-gil, Gangnam-gu, Seoul, Korea (06253)

### Contact

1. Office of Strategic Planning (82)-2-6205-8241  
[minji2667@cement.or.kr](mailto:minji2667@cement.or.kr)
2. Office of External Cooperation (82)-2-538-8235  
[jkang@cement.or.kr](mailto:jkang@cement.or.kr)
3. Office of Future Industry(Technical) (82)-2-538-1721  
[qlty91@cement.or.kr](mailto:qlty91@cement.or.kr)
4. Office of Future Industry(Environment) (82)-2-6205-8240  
[gks7625@cement.or.kr](mailto:gks7625@cement.or.kr)

Fax : (82)-2-538-1720

Website : [www.cement.or.kr](http://www.cement.or.kr)